



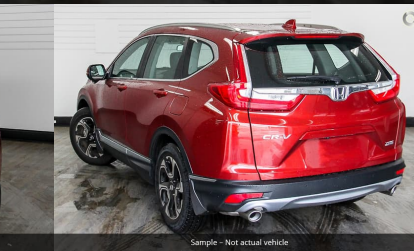
Sample - Not actual vehicle



Sample - Not actual vehicle



Sample - Not actual vehicle



Sample - Not actual vehicle



Sample - Not actual vehicle

2020 Honda CR-V VTi-S RW

\$37,098 Drive Away

Category:	New	Kilometres:	0 kms
Colour:	Red	Transmission:	Automatic
Body:	Suv	Drive Type:	Front Wheel Drive
Fuel Type:	Petrol - Unleaded ULP	Engine:	1498 cc
Reg Plate:	Unregistered	Cylinders:	
Stock #:	219475	VIN:	MRHRW1850LP062050

Dealer: Collins Honda
Address: 325-343 Princes Highway, Rockdale NSW 2216
Phone: 02 9599 4888

Dealer Comments

* If the price does not contain the notation that it is "Drive Away No More to Pay", the price may not include additional costs, such as stamp duty and other government charges. Please confirm price and features with the seller of the vehicle.

Features and Specifications

Audio, Visual & Communication

Audio - Aux Input USB Socket

8 Speaker Stereo

Multi-function Control Screen - Colour

Smart Device Integration - Android Auto

Bluetooth System

HDMI input for Audio/Video

Smart Device App Display/Control

Smart Device Integration - Apple CarPlay

Instruments & Controls

GPS (Satellite Navigation)

Tacho

Tyre Pressure Sensor

Speed Limiter

Trip Computer

Warning - Speed Alert

Interior

Leather Steering Wheel

Trim - Cloth

Lights & Windows

Daytime Running Lamps - LED

Headlamps - Halogen

Intermittent Wipers - Variable

Power Windows - Remote Control Open/Close

Rear Wiper/Washer

Fog Lamps - Front

Headlamps Automatic (light sensitive)

Power Windows - Front & Rear

Rear View Mirror - Manual Anti-Glare

Tail Lamps - LED

Safety & Security

Airbags - Head for 2nd Row Seats

Brake Assist

Camera - Rear Vision

Central Locking - Key Proximity

Control - Electronic Stability

Control - Park Distance Rear

ABS (Antilock Brakes)

Driver Attention Detection

Engine Immobiliser

Parking Assist - Graphical Display

Seatbelt - Pretensioners 1st Row (Front)

Airbags - Head for 1st Row Seats (Front)

Airbags - Side for 1st Row Occupants (Front)

Brake Emergency Display - Hazard/Stoplights

Camera - Side Vision

Central Locking - Remote/Keyless

Control - Park Distance Front

Control - Traction

Control - Trailer Sway

EBD (Electronic Brake Force Distribution)

Hill Holder

Airbag - Driver

Airbag - Passenger

Seating

Headrests - Adjustable 1st Row (Front)

Seat - Height Adjustable Driver

Headrests - Adjustable 2nd Row x3

Seats - 2nd Row Split Fold

Steering

Adjustable Steering Col. - Tilt & Reach

Multi-function Steering Wheel

Power Steering - Electric Assist

Body

Exhaust System - Dual

Roof Rails

Wheels & Tyres

18" Alloy Wheels

Spare Wheel - Full Size Alloy Wheel

Brakes

Disc Brakes Front Ventilated

Disc Brakes Rear Solid

Park Brake - Electric

Electrical

12V Socket(s) - Auxiliary

Comfort & Convenience

Armrest - Front Centre (Shared)

Armrest - Rear Centre (Shared)

Cargo Cover

Cruise Control

Cup Holders - 1st Row

Cup Holders - 2nd Row

Footrest - Drivers

Grab Handle - Drivers Side

Grab Handle - Passengers Side

Grab Handles - 2nd Row

Air Cond. - Climate Control 2 Zone

Keyless Start - Key/FOB Proximity related

Map/Reading Lamps - for 1st Row

Air Conditioning - Pollen Filter

Remote Fuel Lid Release

Seatback Pockets - 1st Row (Front) seats

Starter Button

Storage Compartment - Centre Console 1st Row

Sunglass Holder

Sunvisor - Illuminated Vanity Mirrors Dual

Exterior

Body Colour - Door Handles

Body Colour - Exterior Mirrors Partial

Chrome Exhaust Tip(s)

Power - Boot/Tailgate

Power Door Mirrors - Folding

Spoiler - Rear Roof Mounted

Other

Seats - 2nd Row

Specifications have been sourced from redbook.com.au and are based on manufacturer standard specifications. Actual specifications for this vehicle may differ, please confirm with the seller.